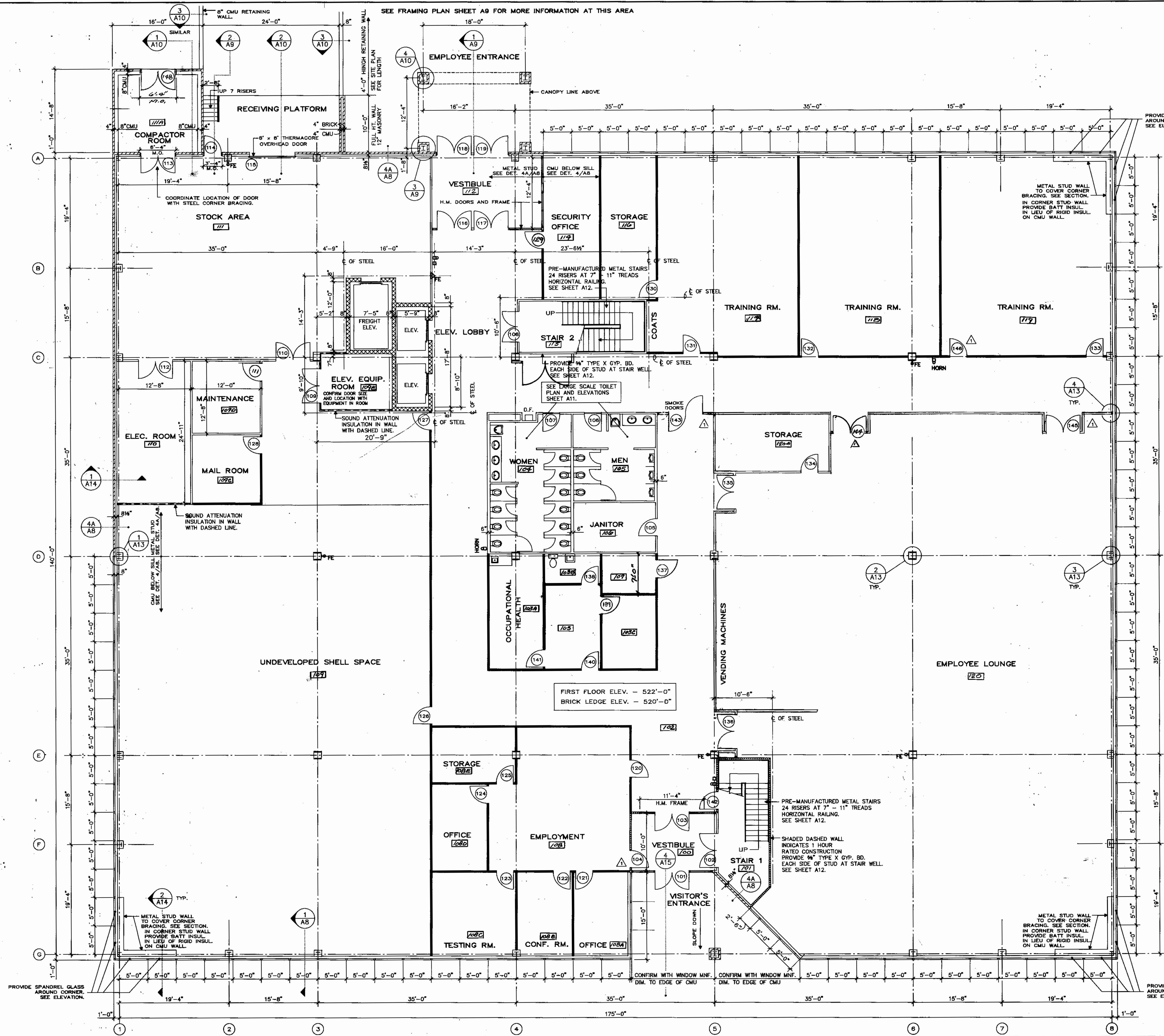




DRAWN BY:  
 CHECKED BY:  
 DATE:  
 SCALE:  
 1/8" = 1'-0"  
 REVISIONS:  
 L&D REQUIREMENTS  
 10/22/90

Plans, maps, specifications, studies and reports not containing an original ink signature by the licensed professional, shall not be considered an original copy.

**HUNT**  
**ENGINEERS & ARCHITECTS**  
 CORNING, NY WILLIAMSPORT, PA CANNANGA, NY  
 410 PENN STREET • WILLIAMSPORT, PA 17701 • TELEPHONE (717) 323-0274



**NOTES**

- INTERIOR FINISHES SHALL BE AS STATED IN THE OUTLINE SPECIFICATION FOR PENNSYLVANIA BLUE SHIELD WILLIAMSPORT OPERATIONS FACILITY DATED MAY 16, 1990.
- WINDOWS BASED ON SERIES 450 FRAMES AS MANUFACTURED BY CAPITOL PRODUCTS CO.

**LEGEND**

NOTE:  
 ALL GYPSUM BOARD BASED ON U.S. GYPSUM CO. SHALL BE REGULAR TYPE 1/2" THICK.  
 5/8" TYPE X GYPSUM BOARD SHALL BE PROVIDED AT FIREWALLS WHERE INDICATED ON DRAWINGS.

DEMOUNTABLE PARTITIONS  
 GOLD BOND CB-350  
 MOVABLE WALL SYSTEM

VERIFY LOCATIONS OF MOVABLE WALLS THAT ARE NOT CENTERED ON COLUMN LINE OR ALIGNED WITH STUD WALLS WITH BLUE SHIELD.

3/4" METAL STUDS TO UNDER SIDE OF FLOOR OR ROOF DECK SIMILAR TO USG #338 STANDARD METAL STUDS AND RUNNERS. AT STAIR WELLS STUDS SHALL BE SIMILAR TO USG #358-20 GA. USE 6" METAL STUDS WHERE INDICATED AT TOILET ROOMS.

RECESSED FIRE EXTINGUISHER MIN. 2A RATING  
 SURFACE MOUNTED FIRE EXTINGUISHER MIN. 2A RATING  
 MANUAL FIRE ALARM PULL STATION HORN



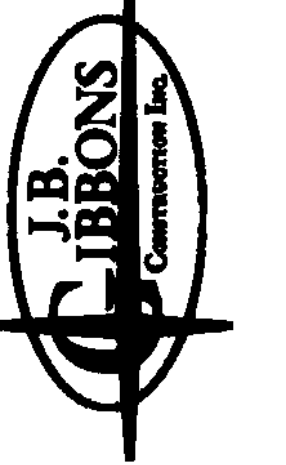
FIRST FLOOR PLAN

PROPOSED NEW OFFICE BUILDING  
 CENTER CITY - WILLIAMSPORT, PA

Pennsylvania  
**Blue Shield**

SHEET NO:  
**A1**

PROJECT NO:  
 5172



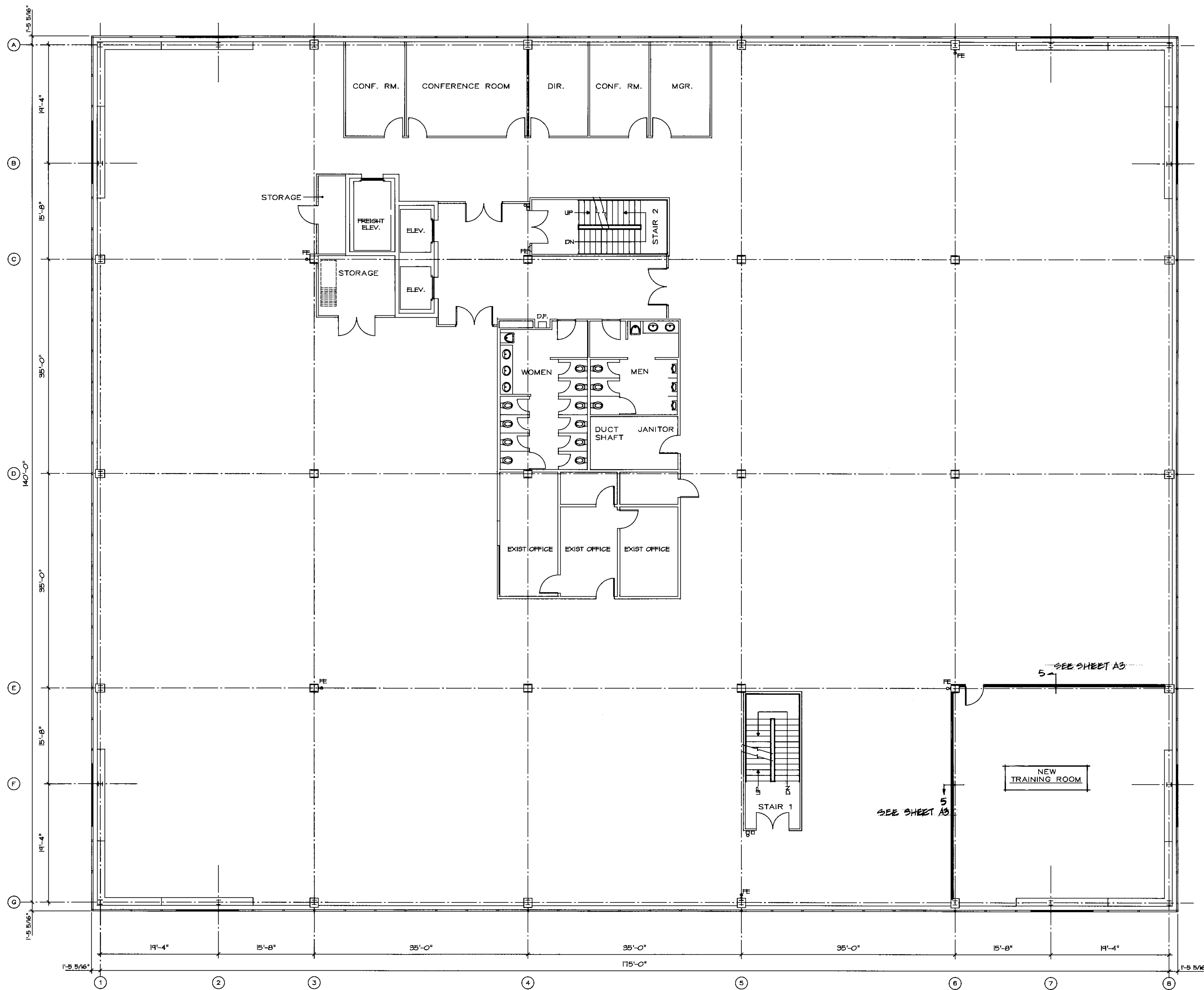
REVISIONS:

SECOND FLOOR PLAN  
RENOVATIONS FOR  
**BLUE CROSS BUILDING**  
175 PINE STREET  
WILLIAMSPORT PA 17701

SCALE:  
AS NOTED

DATE:  
OCT. 18, 2000

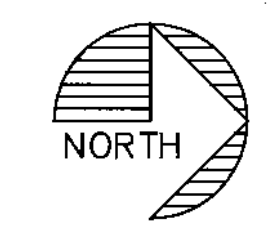
SHEET NO.  
A2

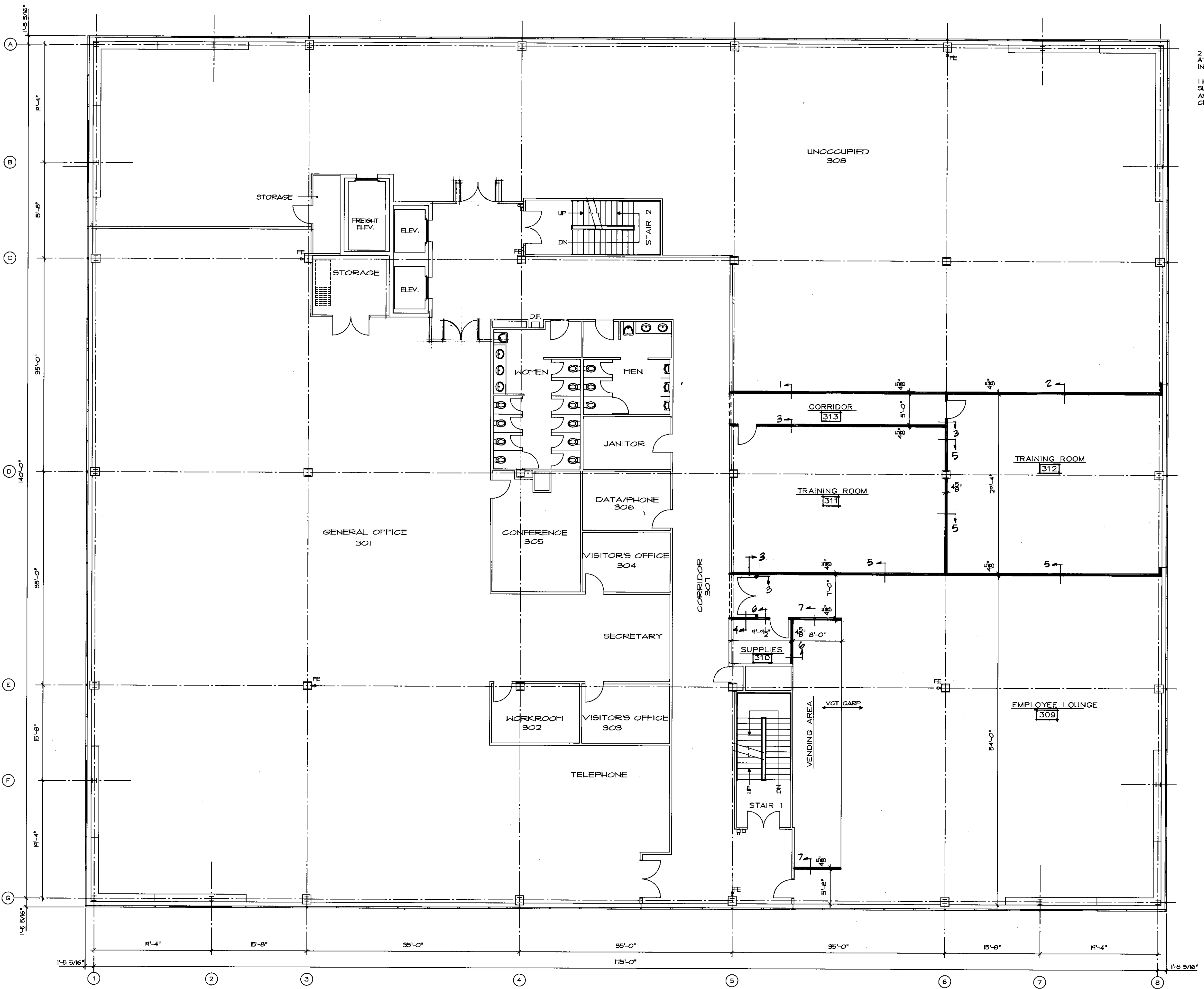


PREVIOUS DEPARTMENT OF  
LABOR & INDUSTRY APPROVAL:  
FILE NO. 367648  
INDEX NO. 2000-01491

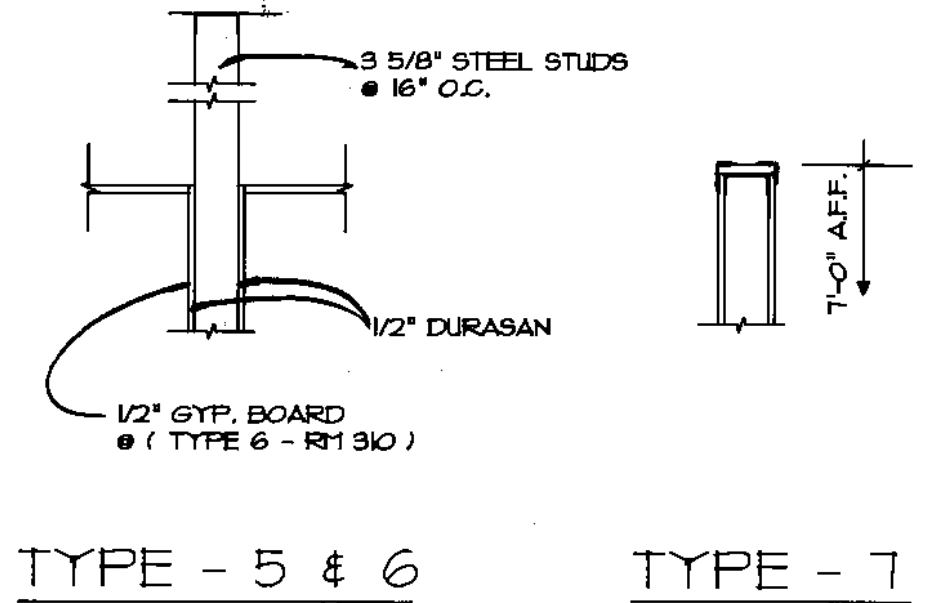
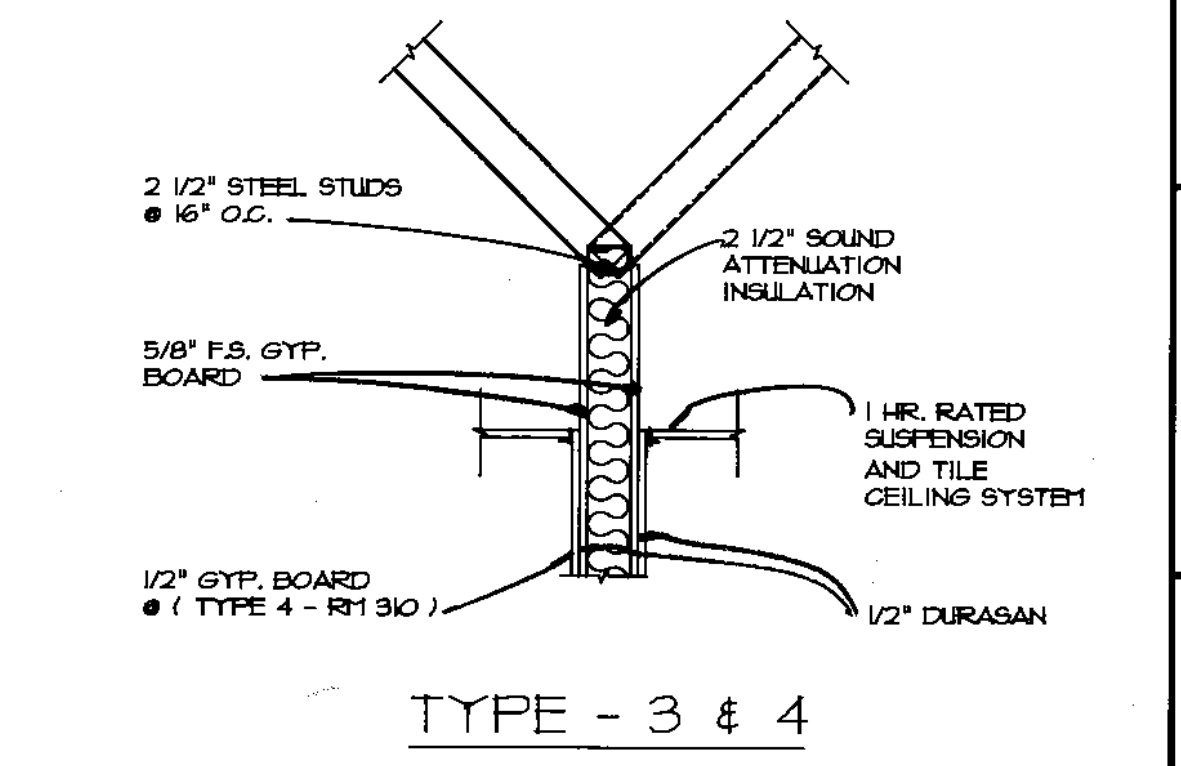
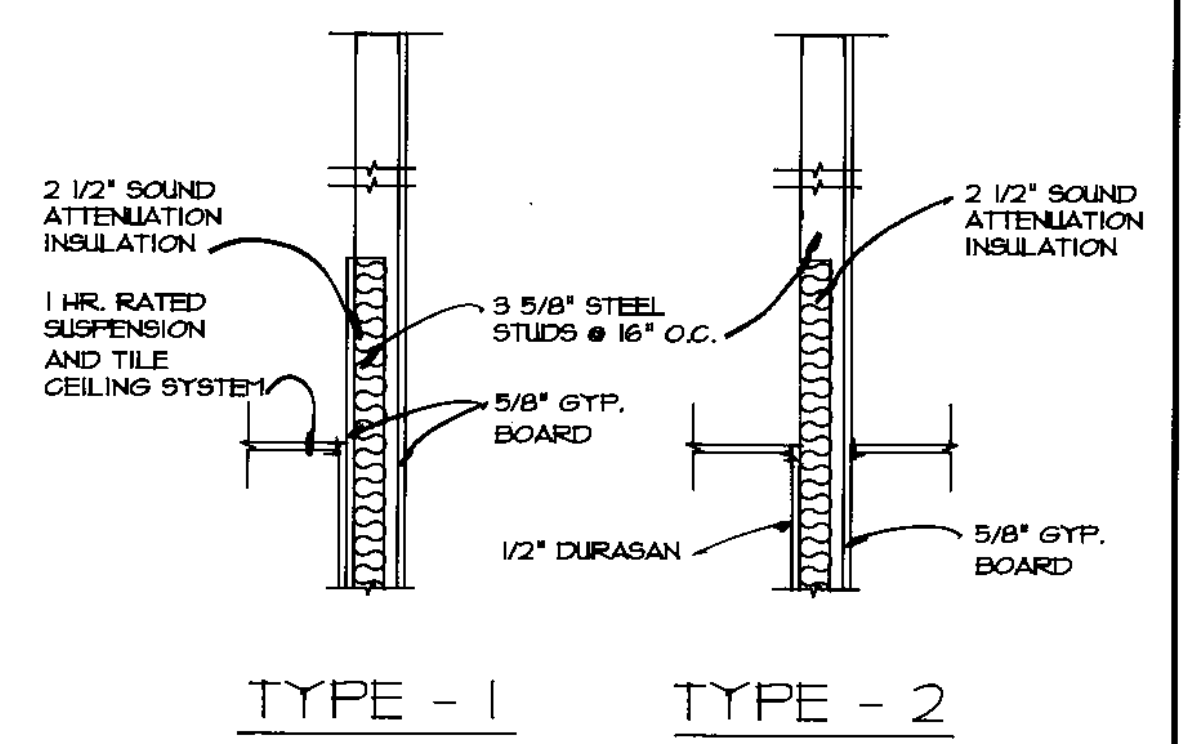
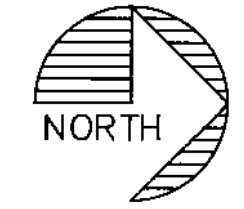
- LEGEND**
- FE<sup>4</sup> RECESSED FIRE EXTINGUISHER  
MIN. 2A RATING
  - FE<sup>5</sup> SURFACE MOUNTED FIRE EXTINGUISHER  
MIN. 2A RATING
  - B D HORN MANUAL FIRE ALARM PULL STATION

**SECOND FLOOR PLAN**  
SCALE: 1/8" = 1'-0"





THIRD FLOOR PLAN  
SCALE: 1/8" = 1'-0"



PARTITION TYPES  
SCALE: 3/4" = 1'-0"

LEGEND

- FE 4 RECESSED FIRE EXTINGUISHER  
FIN. 2A RATING
- FE 5 SURFACE MOUNTED FIRE EXTINGUISHER  
FIN. 2A RATING
- B 0 MANUAL FIRE ALARM FULL STATION  
HORN

130 WILDWOOD BLVD.  
P.O. BOX 1777  
WILLIAMSPORT, PA 17701



REVISIONS:

THIRD FLOOR PLAN  
RENOVATIONS FOR  
**BLUE CROSS BUILDING**  
175 FINE STREET  
WILLIAMSPORT PA 17701

SCALE:  
1/8" = 1'-0"  
DATE:  
OCT. 18, 2000  
SHEET NO.  
**A3**